



INS
SUI
®
L
L
E
E
X
E
L
L
D

DEXELL[®] SUI

FOR STRESS URINARY INCONTINENCE TREATMENT
NEW GENERATION INJECTION IMPLANT

FEATURES OF DEAE SEPHADEX MICROSPHERES

The cross-linked hyaluronic acid (Hylan gel) primarily functions as a means of transportation for the dextranomere microparticles which stimulate the connective tissue at the place of injection.

Hylan gels as well as the dextranomere microparticles of DEXELL SUI are biodegradable and biocompatible.

Stress Urinary Incontinance (SUI) is a complex and major health problem, specially for women.

Since decades is an array of many treatment options. The first choice treatment should be the least invasive available with the fewest potential complications for the patients.

One of these treatments is injection of a “bulking agent”. A product in this meaning has to be:

- **Non Immunogenic**
- **Biocompatible**
- **Non allergic**
- **Biodegradable by time**
- **Long lasting**
- **No migration**
- **No rigid**



The Main characteristic has to show an excellent wound-healing with a minimal inflammatory response.

The Biomaterial should be elastic, only elastic microparticles provide a sufficient closure of the urethra.

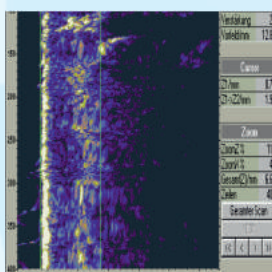
The micro particles in DEXELL SUI are specially designed and stimulate new soft tissue (bulking agent).

The biomaterial should be easy to inject and viscous to prevent leakage from the injection site.

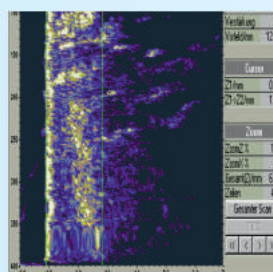
The sub mucosal implantation in the mid-urethra region has to be easy to handle with an special applicator to guide the needle of the syringe.

The method of implantation with DEXELL SUI is designed to be minimally invasive and accurate to create a bolus in the position in 3,6,9,12 o'clock.

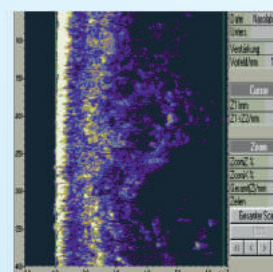
The treatment with DEXELL SUI can be performed under local anesthetic in the outpatient department which allows the patient to return the same day.



1 min after injection



New Collagen 3 weeks after the injection



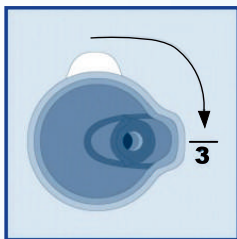
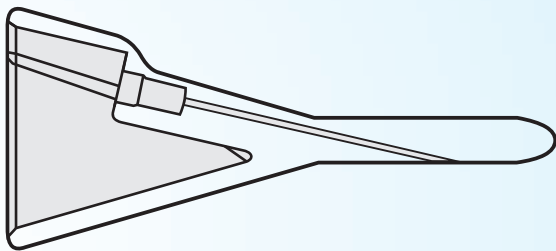
New Collagen 18 months after the injection

FOR STRESS URINARY INCONTINANCE TREATMENT KIT

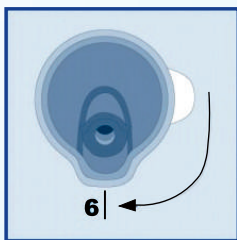
DEXELL SUI applicator is designed for minimally invasive & safe injection.

Benefits:

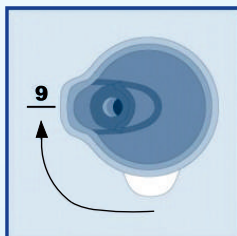
- Controlled implantation at 4 different positions
- No need for general anesthesia
- No need for hospitalization procedures
- Application under local anesthetics
- Short stay times in hospital environmental
- Long lasting effects
- Minimally invasive and safe interference
- Immediate result
- Final Permanent Solution



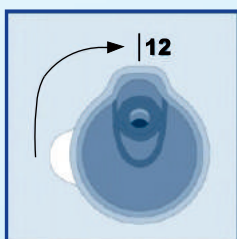
--- Inject 1 ml of DEXELL SUI in 3-hour clock direction



--- Inject 1 ml of DEXELL SUI in 6-hour clock direction



--- Inject 1 ml of DEXELL SUI in 9-hour clock direction



--- Inject 1 ml of DEXELL SUI in 12-hour clock direction

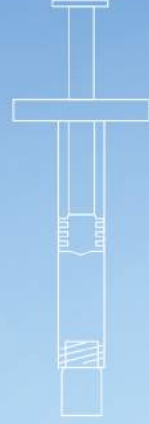


DEXELL SUI

DEXELL[®]_{SUI}

DEXELL[®]_{SUI} 1 ml syringe contents

Cross-linked Sodium Hyaluronate (Hylan Gel)	15 mg
DEAE Sephadex Dextranomer	50 mg
Sodium Chloride	6.9 mg
Water for injection ad	1 ml



**Istem**

MEDİKAL TIBBİ CİHAZ VE SANAYİ LTD.ŞTİ.

CE 1783

export@istemmedikal.com

Anadolu OSB 29 Ekim Cad. No:39 06909, Sincan/Ankara-TURKEY

Tel: +90 312 503 00 01-04 Fax: +90 312 219 56 13

E-mail: export@istemmedikal.com www.istemmedikal.com