



SENSOFLUSH®

Sterile 0,9% Sodium Chloride Solution

For IV Flushing ONLY

Suitable for use on a sterile field

Not for reconstitution of drugs or patient rehydration



CE 2292

LATEX FREE

STERILE R


MEDİKAL TIBBİ CİHAZ VE SANAYİ LTD.ŞTİ.

SENSOFLUSH Prefilled Syringe with Sterile 0,9% Sodium Chloride Solution

SENSOFLUSH is specifically designed for the flushing of in-situ vascular access devices in order to maintain patency and reduce the risk of contamination.

SENSOFLUSH is sterile and available in single-use pre-filled syringes. The syringe is latex free, made of polypropylene and has luer lock. Isotonic solution in the syringe is preservative-free and non-pyrogenic.

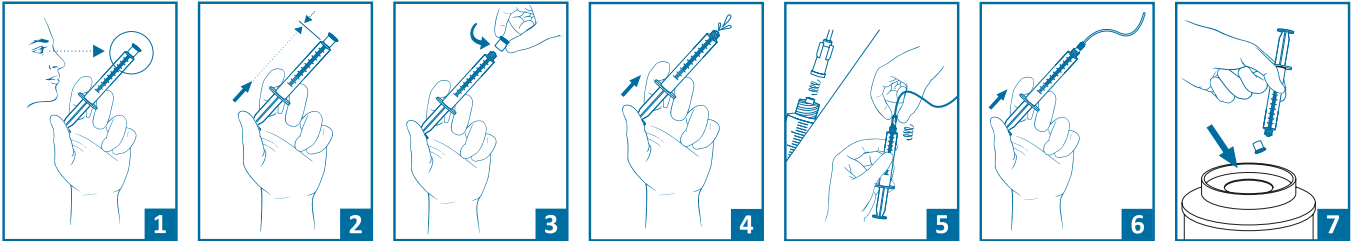
Indications: SENSOFLUSH is suitable for flushing peripheral and central in-situ vascular access devices. It is not for direct intravenous injection.

Classification: Class III, According to 93/42 /EEC Medical Device Directive

How to use SENSOFLUSH?

Use aseptic technique throughout the procedure.

- Check the patient's identity, prescription and SENSOFLUSH packaging for details and ensure packaging is intact.
- Open packaging and remove syringe.
- Remove the luer lock cap by unscrewing and ensuring that there is no touch contamination of the syringe luer connection.
- Hold the tip of syringe upward and push the plunger of the syringe to expel the air.
- Attach the syringe to the vascular access device, taking care that there is no touch contamination of the connection and ensure it is locked in place.
- Flush the vascular access device using appropriate technique and volume according to your local policy.
- Dispose of all equipment including any remaining flush solution in line with your hospital's waste disposal policy.
- Complete documentation in patient care records.



Packaging: SENSOFLUSH is available in sterile and disposable packages. The quantities in each box are explained for different models of SENSOFLUSH as below.

REFERENCE	DESCRIPTION	QTY/BOX
SF-003	3 ml of 0,9% Sodium Chloride Solution in a 10 ml Luer Lock Syringe	(36x3ml/Box)
SF-005	5 ml of 0,9% Sodium Chloride Solution in a 10 ml Luer Lock syringe	(36x5ml/Box)
SF-010	10 ml of 0,9% Sodium Chloride Solution in a 10 ml Luer Lock Syringe	(36x10ml/Box)
SF-020	20 ml of 0,9% Sodium Chloride Solution in a 20 ml Luer Lock Syringe	(36x20ml/Box)